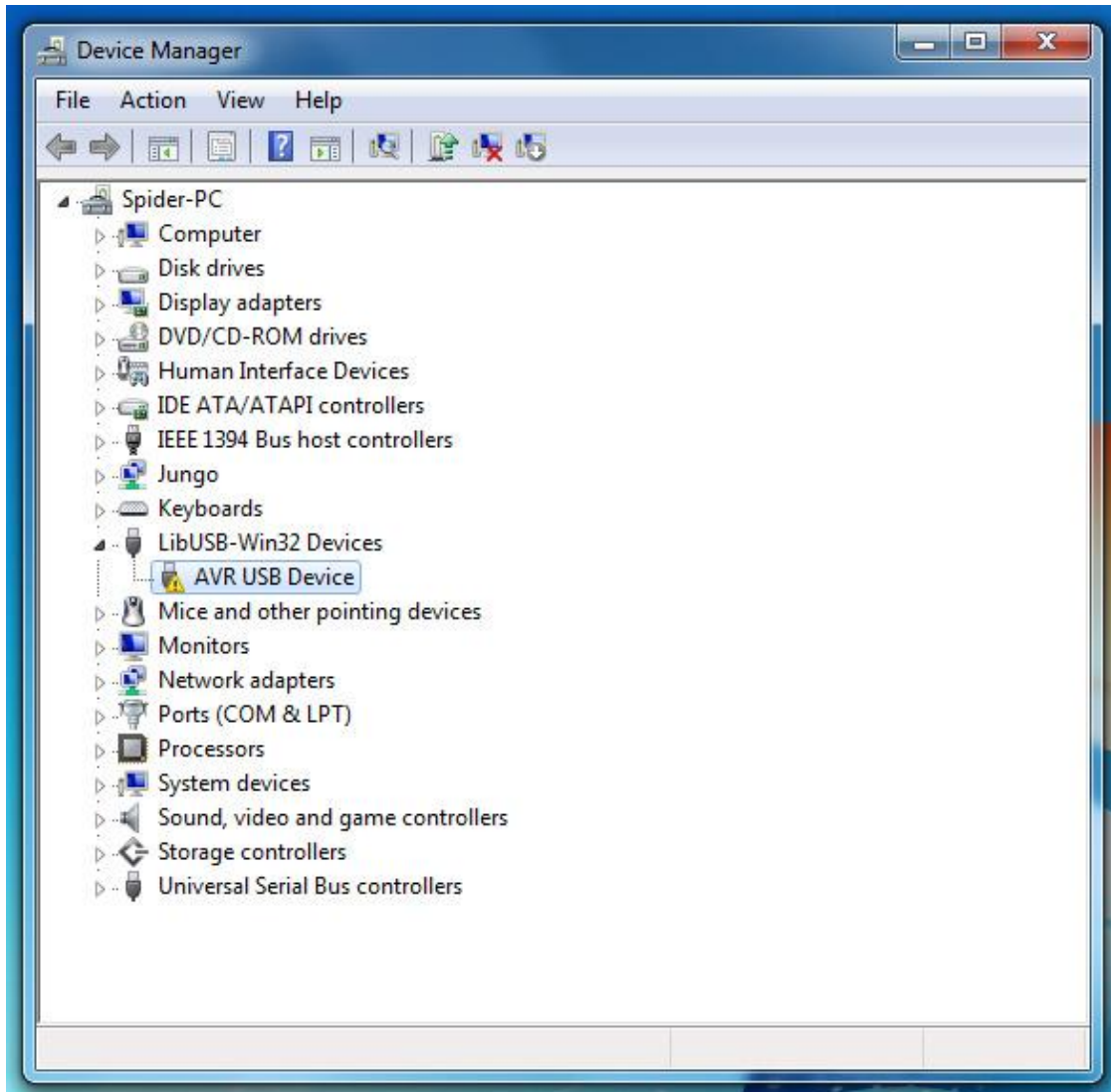


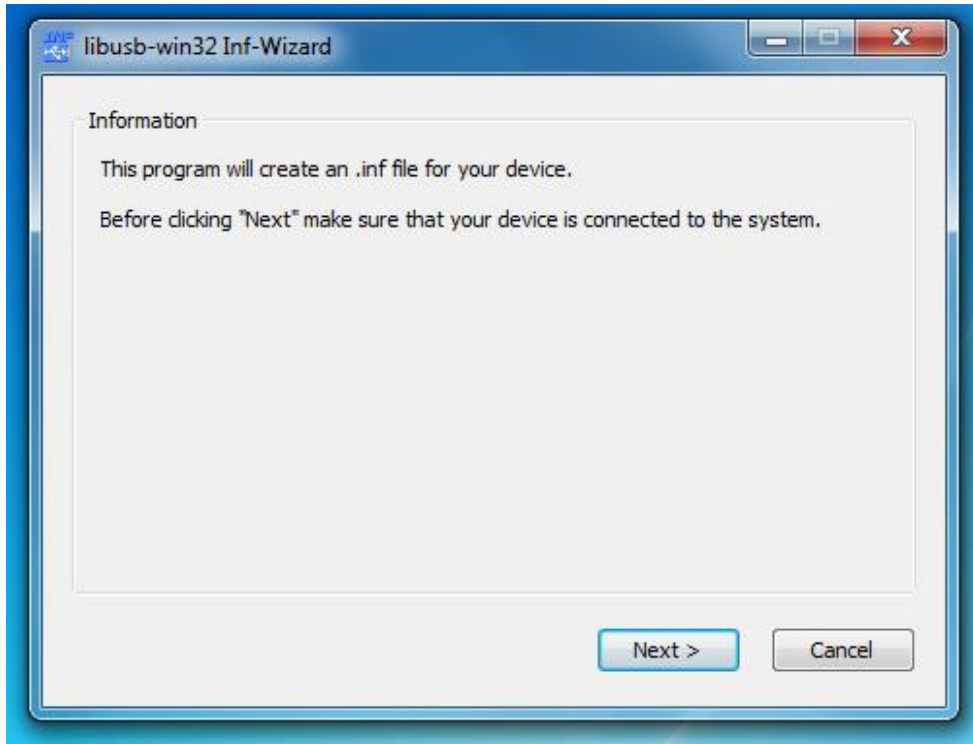
## Windows driver Installation instructions for SnaLY-160

Drivers should work in Windows XP, Vista, Windows7 32 and 64 bit OS environments.  
For more information look in „SNA LY\libusb-win32-bin-debug-1.2.5.0“

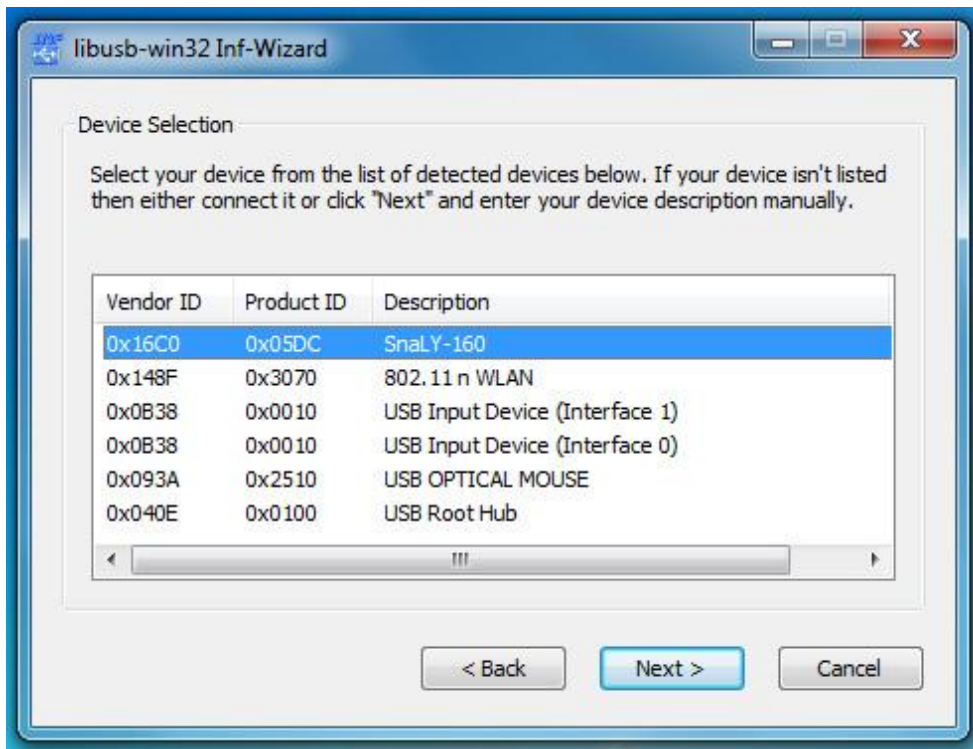
1. Attach the programmed device to the PC's USB connector.  
Ignore all automatic installation proposals.  
Now Device Manager should show LibUSB-Win32 device:



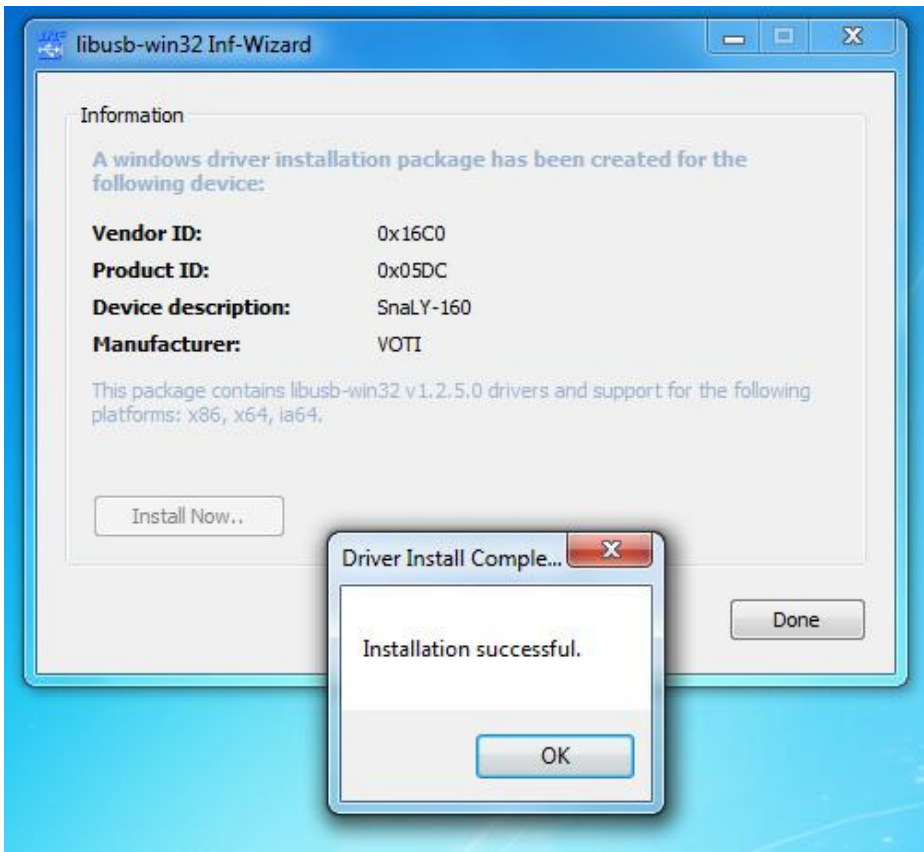
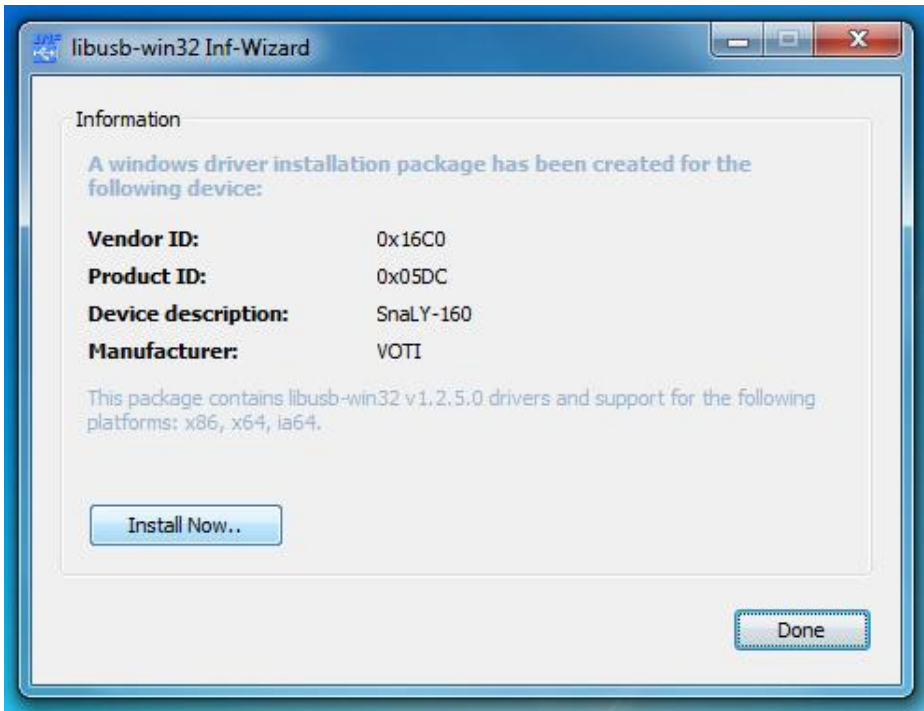
2. Start manual driver installation by clicking on:  
SNA LY\libusb-win32-bin-debug-1.2.5.0\libusb-win32-bin-1.2.5.0\bin\inf-wizard.exe  
Press „Next“



3. Choose SnaLY-160 device and press „Next“->“Next“



4. Press „Install now“



After successful installation you should see:

